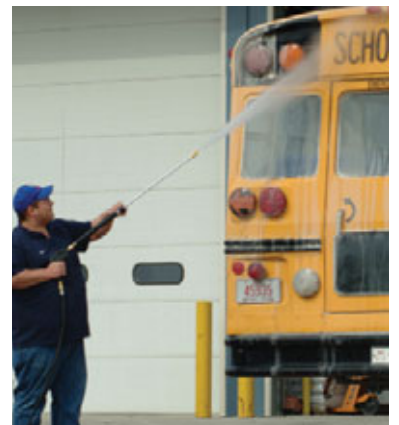
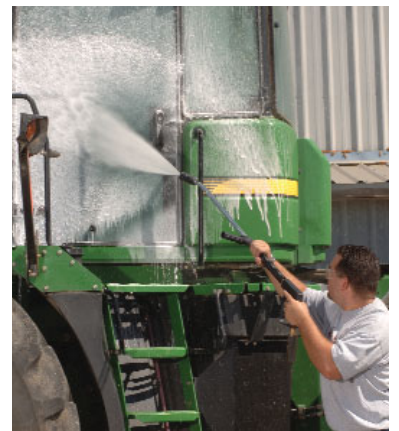
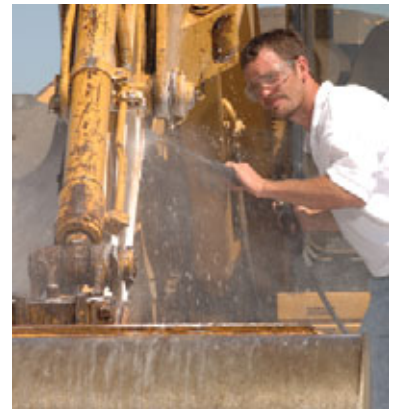


SHARK SERIES



# Rugged, Skid-Mounted Electric-Powered, Diesel-Heated Hot Water Pressure Washer



## Super-Duty, Skid-Mounted, Electric-Powered Hot Water Pressure Washer for the Toughest of On-Site Cleaning Jobs

For customers with AC power on the job site, our Shark Series electric skid models are an attractive alternative to gasoline-powered units. All

- **Heavy-Gauge 1 1/4" Steel Frame**
- **Belt-Drive Kärcher Pump with 7-Year Warranty**
- **230V and 460V**
- **1/2" Schedule 80 Heating Coil with 5-Year Warranty**

three models offer equal industrial ruggedness with extra-durable components mounted on an open frame made of 1 1/4" powder-coated steel. The powerful Kärcher belt-drive crankcase pump, with 7-year warranty, and Baldor motor are cushioned by a shock-mounted sub-frame to reduce vibration. The Schedule 80 heating coil comes standard with a stainless steel wrap. Each model is ETL certified to both UL and CSA safety standards.

### TYPICAL APPLICATIONS

- Waste Haulers
- Agriculture
- Tankers
- Engines
- Heavy Equipment
- Industrial
- Construction
- Fleets

### WHY KÄRCHER



Kärcher is the most trusted name in pressure washers—a fact confirmed when Kärcher was the only brand

selected to clean the famous Mount Rushmore National Monument in 2005.

Founder Alfred Kärcher invented hot water pressure washing in 1950. Today, as the world's largest manufacturer of pressure washers, Kärcher is the recognized innovative leader in the industry with over 300 patents.



**Dimensions:**  
41"L x 41"W x 41"H

- Industrial-grade Baldor **motor** with two-year warranty
- Efficient **Becket burner** with transformer for years of reliable and affordable operation
- Easy-reach **detergent metering valve** adjusts high-pressure flow of detergent
- Industrial-grade, tri-plunger, oil-bath, belt-drive, **Kärcher pump** with 7-year warranty
- 50 ft. of wire braid **hose** with extended guard for burst protection
- High pressure **rupture disc** rated to 8500 lbs to protect user against injury
- Cast iron **pulley system** with totally enclosed, OSHA-compliant belt guard, and easy-to-adjust TrueTrak belt tension
- **ETL certified** to rigid UL and CSA safety standards

- Heavy-gauge 1 1/4" **steel frame** with powder coat finish for all-weather protection
- Power platform cushioned on 8 **vibration isolators** for smoother operation and long-life protection to frame and components
- 2.5 gal. **float tank** for high-pressure application of soap and to prevent pump cavitation
- 10 micron fuel / water separator to protect burner from fuel contaminants
- Rust-free, 8-gallon polyethylene diesel **fuel tank** for hours of operation without interruption
- Insulated Schedule 80 **heating coil** is made of 1/2-inch steel pipe and cold rolled; comes standard with stainless steel coil wrap and 5-year warranty
- Insulated trigger **gun** for hours of fatigue-free cleaning
- Water resistant **control box** with burner on/off switch, adjustable thermostat and hour meter
- Thermal **pump saver valve** protects against hot-water damage by venting recirculated water
- Insulated, high-pressure **wand** with quick-couple connectors for easy attachment of high-pressure spray nozzles
- Tri-lingual **operating instructions**

Model	Order No.	GPM	PSI	HP	Electrical	Amps	Pump	Ship Wt
HDS 4.8/30 Ea Cage	1.575-620.0	4.8	3000	10	230V / 1 ph	45	Kärcher KT	900 lbs
HDS 4.8/30 Eb Cage	1.575-621.0	4.8	3000	10	230V / 3 ph	30	Kärcher KT	830 lbs
HDS 4.8/30 Ec Cage	1.575-622.0	4.8	3000	10	460V / 3 ph	16	Kärcher KT	820 lbs

YOUR AUTHORIZED KÄRCHER DEALER:



Kärcher Commercial Pressure Washers  
www.karchercommercial.com  
info@karchercommercial.com  
888-805-9852 • Fax 800-248-8409