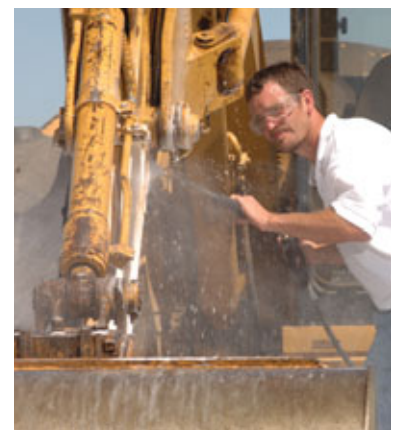
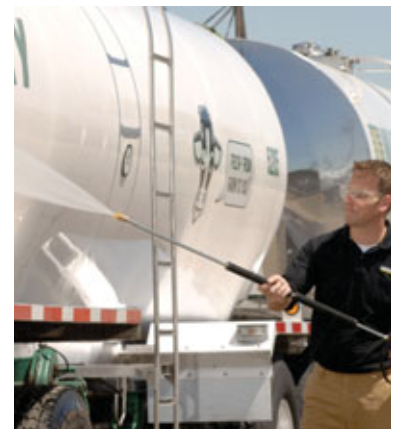
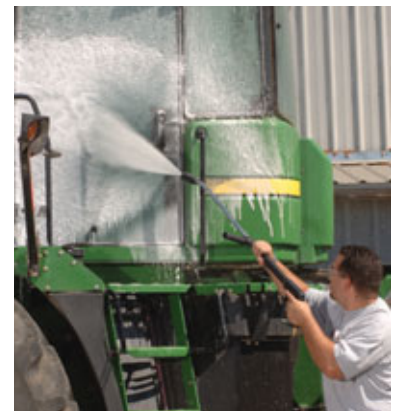


LIBERTY SERIES



Rugged, Skid-Mounted Gasoline- or Diesel-Powered Hot Water Pressure Washer



LIBERTY SERIES



Super-Duty, Skid-Mounted, Gasoline- or Diesel-Powered Hot Water Pressure Washer for Toughest of Outdoor Cleaning Jobs

Liberty Series oil-fired skids are the workhorses of the pressure washer industry. Delivering up to 5.6 GPM of hot water at up to

- **Heavy-Gauge 1 1/4" Steel Frame**
- **Belt-Drive Kärcher KT Pump with 7-Year Warranty**
- **Gas or Diesel Engine**
- **1/2" Schedule 80 Heating Coil**
- **Standard Steam Stage**

3500 PSI, these skid-mounted gas- and diesel-powered machines are built on an open frame using heavy-gauge 1 1/4" powder coated steel and can be mounted to a truck or trailer. The engine and powerful belt-drive pumping unit are isolated from the rest of the machine on a shock-mounted sub-frame to reduce vibration. Each unit is ETL certified and comes with a Kärcher KT series pump and a Schedule 80 heating coil with standard stainless steel wrap.

TYPICAL APPLICATIONS

- Waste Haulers
- Heavy Equipment
- Agriculture
- Industrial
- Tankers
- Construction
- Engines
- Fleets

WHY KÄRCHER



Kärcher is the most trusted name in pressure washers—a fact confirmed when Kärcher was the only brand

selected to clean the famous Mount Rushmore National Monument in 2005.

Founder Alfred Kärcher invented hot water pressure washing in 1950. Today, as the world's largest manufacturer of pressure washers, Kärcher is the recognized innovative leader in the industry with over 300 patents.



Dimensions:

Gas Engine 41"L x 41"W x 41"H
 Diesel Engine 44"L x 51"W x 41"H



- Reliable, super-duty gasoline- or diesel-powered **engines** with electric start
- High-output **burner** with transformer for years of reliable and affordable operation
- Easy-reach **detergent metering valve** adjusts high-pressure flow of detergent
- Industrial-grade, tri-plunger, oil-bath, belt-drive, **Kärcher pump** with 7-year warranty
- 50 ft. of double-wire braid **hose** with extended guard for burst protection
- High pressure **rupture disc** rated to 7000 PSI to protect user against injury

- Heavy-gauge 1 1/4" **steel frame** with powder coat finish for all-weather protection
- Power platform cushioned on 8 **vibration isolators** for smoother operation and long-life protection to frame and components
- Cast iron **pulley system** with totally enclosed, OSHA-compliant belt guard, and easy-to-adjust TrueTrak belt tension
- 2.5 gal. **float tank** for high-pressure application of soap and to prevent pump cavitation
- Rust-free, 9-gallon polyethylene diesel **fuel tanks** for hours of operation without interruption
- Insulated Schedule 80 **heating coil** is made of 1/2-inch, cold-rolled, steel pipe; with stainless steel wrap and 5-year warranty
- Insulated trigger **gun** for hours of fatigue-free cleaning
- Water resistant **control box** with burner on/off switch, adjustable thermostat and hour meter
- Thermal **pump saver valve** protects against hot-water damage by venting recirculated water

Model	Order No.	GPM	PSI	Engine / HP	Fuel	Pump	Burner	Ship Wt
HDS 3.9/30 Pe Cage	1.575-600.0	3.9	3000	Honda 13	Gas	Kärcher KT	12V DC	840 lbs
HDS 4.8/30 Pe Cage	1.575-601.0	4.8	3000	Vanguard 16	Gas	Kärcher KT	12V DC	854 lbs
HDS 4.8/30 Pe Cage	1.575-602.0	4.8	3000	Vanguard 16	Gas	Kärcher KT	120V AC	945 lbs
HDS 4.7/35 Pe Cage	1.575-603.0	4.7	3500	Honda 20	Gas	Kärcher KT	12V DC	855 lbs
HDS 4.7/35 Pe Cage	1.575-604.0	4.7	3500	Honda 20	Gas	Kärcher KT	120V AC	935 lbs
HDS 5.6/35 Pe Cage	1.575-605.0	5.6	3500	Honda 24	Gas	Kärcher KT	12V DC	852 lbs
HDS 5.6/35 Pe Cage	1.575-606.0	5.6	3500	Honda 24	Gas	Kärcher KT	120V AC	970 lbs
HDS 5.6/35 De Cage	1.575-609.0	5.6	3500	Lombardini 27	Diesel	Kärcher KT	12V DC	1200 lbs
HDS 5.6/35 De Cage	1.575-610.0	5.6	3500	Lombardini 27	Diesel	Kärcher KT	120V AC	1280 lbs

YOUR AUTHORIZED KÄRCHER DEALER:



Kärcher Commercial Pressure Washers
 www.karchercommercial.com
 info@karchercommercial.com
 888-805-9852 • Fax 800-248-8409