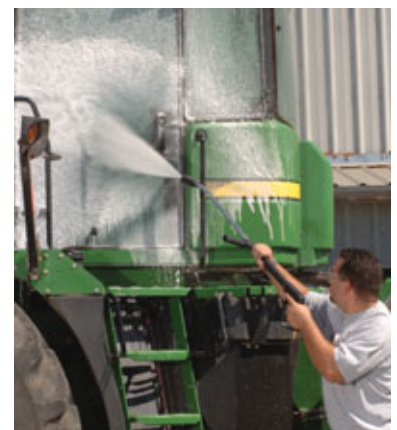
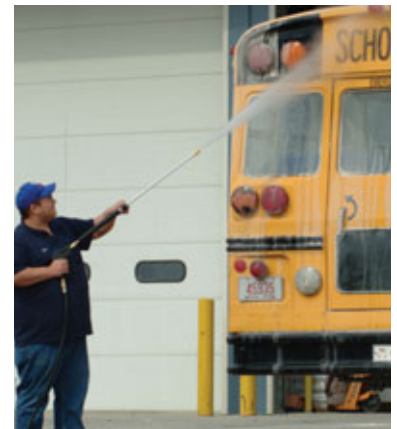
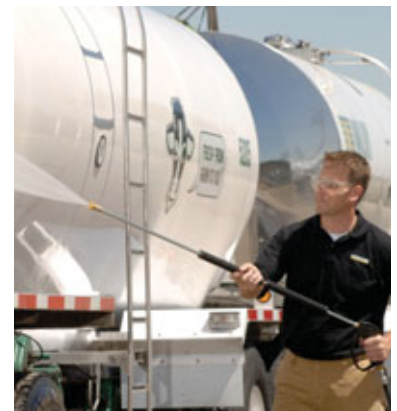


LIBERTY SERIES



Electric-Powered, Diesel-Heated Hot Water Pressure Washer with Hand Truck Design



LIBERTY SERIES



Extra-Rugged, Portable, Electric-Powered Hot Water Pressure Washer with Hand Truck Design for Ease in Maneuvering

Kärcher offers nine hot water pressure washers with our unique hand truck design. These rugged electric-powered, diesel-heated units

- **Heavy-Gauge 1 1/4" Steel Frame**
- **Crankcase Kärcher Pump with 7-Year Warranty**
- **120V, 230V, 460V**
- **1/2" Schedule 80 Heating Coil with 5-Year Warranty**

have an all-metal frame, heavy-duty vertical heating coil with stainless steel wrap, water-resistant control box and tubed pneumatic tires. They come with Kärcher crankcase-

style pumps and are ETL certified to UL and CSA standards. The 1.5 HP model (photo at left) comes in an extra-compact frame.



TYPICAL APPLICATIONS

- Waste Haulers
- Agriculture
- Tankers
- Engines
- Heavy Equipment
- Industrial
- Construction
- Fleets

WHY KÄRCHER



Kärcher is the most trusted name in pressure washers—a fact confirmed when Kärcher was the only brand

selected to clean the famous Mount Rushmore National Monument in 2005.

Founder Alfred Kärcher invented hot water pressure washing in 1950. Today, as the world's largest manufacturer of pressure washers, Kärcher is the recognized innovative leader in the industry with over 300 patents.



Dimensions:

1.5 HP model 31"L x 23"W x 40"H
2 - 5 HP models 28"L x 28"W x 43"H
6 - 7 HP models 41"L x 32"W x 44"H



- Industrial-grade Baldor **motor** with two-year warranty
- High-output **burner** with transformer for years of reliable and affordable operation
- **Options** are auto start/stop or time delay shutdown, float tank, steam combination
- Industrial-grade, tri-plunger, oil-bath, **Kärcher pump** with 7-year warranty
- Easy-grip **handles** and tubed **pneumatic tires** for ease in maneuvering
- Insulated, variable pressure **wand**
- Heavy-gauge 1 1/4" **steel frame** with powder coat finish for all-weather protection
- Safety **relief valve** attached to discharge side for protection against excess pressure build up
- Rust-free, 9-gallon polyethylene diesel **fuel tank** for hours of operation without interruption (5-gallon for 1.5 HP model)
- Insulated Schedule 80 **heating coil** is made of 1/2-inch steel pipe and cold rolled; comes standard with stainless steel coil wrap and 5-year warranty
- Cast iron **pulley system** with OSHA-compliant, totally enclosed belt guard, and easy-to-adjust belt tension (belt-drive models)
- Water resistant **control box** with burner on/off switch and adjustable thermostat
- Tri-lingual **operating instructions**
- 50 ft. of wire braided **hose** with burst guard for added protection
- High pressure **rupture disc** rated to 7000 lbs to protect user against injury

Model	Order No.	GPM	PSI	HP	Electrical	Amps	Pump	Drive	Ship Wt
HDS 2.0/10 Ed	1.575-500.0	2.0	1000	1.5	120V, 1 ph	20	Kärcher KE	Direct	345 lbs
HDS 2.0/14 Ed	1.575-501.0	2.0	1400	2	120V, 1 ph	20	Kärcher KE	Direct	430 lbs
HDS 2.5/10 Ed	1.575-502.0	2.5	1000	2	120V, 1 ph	20	Kärcher KE	Direct	405 lbs
HDS 2.5/16 Ea	1.575-503.0	2.5	1600	3	230V, 1 ph	18	Kärcher KE	Direct	420 lbs
HDS 3.5/20 Ea	1.575-504.0	3.5	2000	5	230V, 1 ph	23	Kärcher KE	Direct	460 lbs
HDS 3.9/20 Ea	1.575-505.0	3.9	2000	6	230V, 1 ph	29	Kärcher KM	Belt	600 lbs
HDS 3.5/30 Ea	1.575-508.0	3.5	3000	7.5	230V, 1 ph	36	Kärcher KM	Belt	650 lbs
HDS 3.5/30 Eb	1.575-509.0	3.5	3000	7.5	230V, 3 ph	25	Kärcher KM	Belt	605 lbs
HDS 3.5/30 Ec	1.575-510.0	3.5	3000	7.5	460V, 3 ph	13	Kärcher KM	Belt	605 lbs

YOUR AUTHORIZED KÄRCHER DEALER:



Kärcher Commercial Pressure Washers
www.karchercommercial.com
info@karchercommercial.com
888-805-9852 • Fax 800-248-8409